

Surveyed and Reported Taxa of the Springtown Area, Livermore, CA – sources: CCH, Calflora

family	taxon	reported as	common	lifeform	native	cnps rarity	calipc rank	observation count
Aizoaceae	Sesuvium verrucosum		verrucose seapurslane	Per	X			1
Amaranthaceae	Amaranthus albus		pigweed amaranth	Ann				0
Amaranthaceae	Nitrophila occidentalis		boraxweed	Per	X			6
Apiaceae	Apium graveolens		Garden celery	Ann, Bi				1
Apiaceae	Conium maculatum		poison hemlock	Per			2:Conium_macul	1
Apiaceae	Eryngium aristulatum		California eryngo	Per	X			0
Apiaceae	Eryngium aristulatum var. aristulatum		California eryngo	Per	X			12
Apiaceae	Eryngium vaseyi		coyotethistle	Per	X			1
Apiaceae	Lomatium caruifolium var. caruifolium		alkali desertparsley	Per	X			1
Apiaceae	Lomatium utriculatum		common lomatium	Per	X			1
Apocynaceae	Asclepias fascicularis		Mexican whorled milkweed	Per	X			1
Asteraceae	Achyraea mollis		soft blow wives	Ann	X			1
Asteraceae	Blennosperma nanum var. nanum		common stickyseed	Ann	X			6
Asteraceae	Centaurea calcitrapa		Purple star thistle	Ann, Per			2:Centaurea_cal	1
Asteraceae	Centaurea iberica		Iberian knapweed	Per				4
Asteraceae	Centaurea melitensis		Napa star thistle	Ann			2:Centaurea_mel	1
Asteraceae	Centaurea solstitialis		yellow star thistle	Ann			1:Centaurea_sol	1
Asteraceae	Centromadia parryi ssp. congdonii		Congdon's tarplant	Ann	X	1B.2		0
Asteraceae	Centromadia pungens	Hemizonia pungens	common tarweed	Ann	X			1
Asteraceae	Centromadia pungens ssp. pungens		common tarweed	Ann	X			1
Asteraceae	Cotula coronopifolia		common brassbuttons	Per			3:Cotula_coronop	1
Asteraceae	Cotula mexicana		Mexican brassbuttons	Per				0
Asteraceae	Deinandra bacigalupii		Livermore moonshine	Ann	X	1B.2		9
Asteraceae	Deinandra lobbii	Hemizonia lobbii	Threeray tarweed	Ann	X			12
Asteraceae	Dittrichia graveolens		stinkwort	Ann			2!:Dittrichia_gra	1
Asteraceae	Hemizonia congesta ssp. lutescens			Ann	X			1
Asteraceae	Deinandra increscens ssp. increscens	Hemizonia increscens ssp. increscens	grassland tarweed	Ann	X			0

Asteraceae	Holocarpha obconica		San Joaquin tarweed	Ann	X		2
Asteraceae	Holocarpha virgata		Pitgland tarweed	Ann	X		0
Asteraceae	Holocarpha virgata ssp. virgata		yellowflower tarweed	Ann	X		3
Asteraceae	Iva axillaris		povertyweed	Per	X		1
Asteraceae	Lactuca serriola		prickly lettuce	Ann		4:Lactuca serrio	1
Asteraceae	Lasthenia californica		California goldfields	Ann	X		0
Asteraceae	Lasthenia ferrisiae		Ferris' goldfields	Ann	X	4.2	10
Asteraceae	Lasthenia fremontii		Fremont's goldfields	Ann, Per	X		4
Asteraceae	Lasthenia glaberrima		smooth goldfields	Ann	X		5
Asteraceae	Lasthenia glabrata ssp. glabrata		yellowray goldfields	Ann	X		4
Asteraceae	Lasthenia gracilis		needle goldfields	Ann	X		3
Asteraceae	Layia chrysanthemoides		smooth tidytips	Ann	X		1
Asteraceae	Layia platyglossa		coastal tidytips	Ann	X		1
Asteraceae	Microseris acuminata		Needle microseris	Ann	X		1
Asteraceae	Microseris douglasii ssp. douglasii		Douglas' silverpuffs	Ann	X		1
Asteraceae	Psilocarphus brevissimus		short woollyheads	Ann	X		1
Asteraceae	Psilocarphus brevissimus var. brevissimus		short woollyheads	Ann	X		4
Asteraceae	Psilocarphus oregonus		Oregon woollyheads	Ann	X		3
Asteraceae	Senecio vulgaris		old man in the Spring	Ann			2
Asteraceae	Silybum marianum		blessed milkthistle	Ann, Per		3:Silybum_mari	1
Asteraceae	Tragopogon porrifolius		Purple salsify	Per			1
Boraginaceae	Heliotropium curassavicum var. oculatum		Seaside heliotrope, alkali heli	Per	X		2
Boraginaceae	Phacelia ciliata		Great Valley phacelia	Ann	X		3
Boraginaceae	Plagiobothrys acanthocarpus		adobe popcornflower	Ann	X		1
Boraginaceae	Plagiobothrys bracteatus		bracted popcornflower	Ann	X		2
Boraginaceae	Plagiobothrys humistratus		dwarf popcornflower	Ann	X		3
Boraginaceae	Plagiobothrys leptocladus		finebranched popcornflower	Ann	X		2
Boraginaceae	Plagiobothrys stipitatus var. micranthus		stalked popcornflower	Ann	X		1
Boraginaceae	Plagiobothrys stipitatus var. stipitatus		stalked popcornflower	Ann	X		1
Boraginaceae	Plagiobothrys trachycarpus		roughfruit popcornflower	Ann	X		1
Brassicaceae	Hirschfeldia incana		short podded mustard	Per		2:Hirschfeldia_i	1
Brassicaceae	Hornungia procumbens	Hutchinsia procumbens	prostrate hutchinsia	null			5

		Lepidium dictyotum var. acutidens					
Brassicaceae	Lepidium acutidens			Ann, Per	X		7
Brassicaceae	Lepidium dictyotum		alkali pepperweed	Ann	X		2
Brassicaceae	Lepidium latipes var. latipes		San Diego pepperweed	Ann	X		4
Brassicaceae	Lepidium nitidum		shining pepperweed	Ann	X		1
Brassicaceae	Lepidium oxycarpum		forked pepperweed	Ann	X		1
Campanulaceae	Downingia cuspidata		toothed calicoflower	Ann	X		6
Campanulaceae	Downingia insignis		harlequin calicoflower	Ann	X		1
Campanulaceae	Downingia pulchella		flatface calicoflower	Ann	X		11
Caryophyllaceae	Cerastium glomeratum		Mouseear chickweed	Ann			1
Caryophyllaceae	Sagina decumbens ssp. occidentalis		western pearlwort	Ann	X		1
Caryophyllaceae	Spergula arvensis ssp. arvensis		stickwort	Ann			1
Caryophyllaceae	Spergularia macrotheca var. longistyla		sticky sandspurry	Per	X		4
Caryophyllaceae	Spergularia marina	Spergularia salina	Salt Marsh Sand Spurry	Ann	X		3
Caryophyllaceae	Stellaria pallida		pale starwort	Ann			1
Chenopodiaceae	Allenrolfea occidentalis		iodinebush	Shrub	X		10
Chenopodiaceae	Arthrocnemum subterminale	Salicornia subterminalis	Parish's glasswort	Per	X		8
Chenopodiaceae	Atriplex argentea var. expansa	Atriplex argentea var. mohavensis		Ann	X		1
Chenopodiaceae	Atriplex cordulata		heartscale	Ann	X	x[1B.2]	1
Chenopodiaceae	Atriplex coronata var. coronata		crownscale	Ann	X	4.2	1
Chenopodiaceae	Atriplex depressa		brittlescale	Ann	X	1B.2	6
Chenopodiaceae	Atriplex dioica			null	X		1
Chenopodiaceae	Atriplex fruticulosa		valley saltbush	Per	X		3
Chenopodiaceae	Atriplex joaquinana		San joaquin spearscale	Ann	X	1B.2	2
Chenopodiaceae	Atriplex joaquiniana		San Joaquin saltbush	Ann	X	x[1B.2]	3
Chenopodiaceae	Atriplex minuscula		lesser saltscale	Ann	X	1B.1	0
Chenopodiaceae	Atriplex rosea		tumbling saltweed	Ann			2
Chenopodiaceae	Atriplex semibaccata		Australian saltbush	Per		2:Atriplex_semi	1
Chenopodiaceae	Atriplex prostrata	Atriplex triangularis	Fat-hen	Ann			1
Chenopodiaceae	Chenopodium album		white goosefoot	Ann			2
Chenopodiaceae	Salsola tragus		Russianthistle	Ann		3:Salsola_tragu:	1
Chenopodiaceae	Suaeda nigra	Suaeda moquinii		Per	X		9

Convolvulaceae	Convolvulus arvensis		field bindweed	Per, Vine		4:Convolvulus%	1
Convolvulaceae	Cressa truxillensis		spreading alkaliweed	Per	X		1
Convolvulaceae	Cuscuta californica var. californica		chaparral dodder	Ann, Vine (jX			2
Convolvulaceae	Cuscuta salina		saltmarsh dodder	Ann, Vine (jX			2
Crassulaceae	Crassula aquatica		water pygmyweed	Ann	X		5
Crassulaceae	Crassula connata		sand pygmyweed	Ann	X		1
Cyperaceae	Bolboschoenus maritimus		Alkali bulrush	Per	X		0
Cyperaceae	Bolboschoenus maritimus ssp. paludosus		Saltmarsh bulrush	Per	X		1
Cyperaceae	Eleocharis macrostachya		common spikerush	Per	X		1
Cyperaceae	Schoenoplectus acutus var. occidentalis		tule	Per	X		1
Euphorbiaceae	Chamaesyce ocellata ssp. ocellata		Contura Creek sandmat	Ann	X		1
Euphorbiaceae	Chamaesyce serpyllifolia		thymeleaf sandmat	Ann	X		0
Euphorbiaceae	Chamaesyce serpyllifolia ssp. serpyllifolia		thymeleaf sandmat	Ann	X		2
Euphorbiaceae	Croton setigerus		dove weed	Ann	X		1
Fabaceae	Astragalus tener var. tener		alkali milkvetch	Ann	X	1B.2	0
Fabaceae	Lupinus bicolor		miniature lupine	Ann, Per	X		1
Fabaceae	Lupinus concinnus		scarlet lupine	Ann	X		1
Fabaceae	Lupinus nanus		sky lupine	Ann	X		1
Fabaceae	Medicago polymorpha		Bur medic, bur clover	Ann		3:Medicago_pol	1
Fabaceae	Melilotus indicus		annual yellow sweetclover	Ann			1
Fabaceae	Trifolium barbigerum		bearded clover	Ann	X		1
Fabaceae	Trifolium grayi	Trifolium andrewsii	Gray's clover	Ann	X		2
Fabaceae	Trifolium depauperatum var. depauperatum		cowbag clover	Ann	X		4
Fabaceae	Trifolium depauperatum var. truncatum		dwarf sack clover	Ann	X		2
Fabaceae	Trifolium fucatum	Trifolium flavulum,Trifolium gambelii	bull clover	Ann	X		6
Fabaceae	Trifolium fragiferum		strawberry clover	Per			1
Fabaceae	Trifolium willdenovii		tomcat clover	Ann	X		0
Frankeniaceae	Frankenia salina		alkali seaheath	Per	X		2

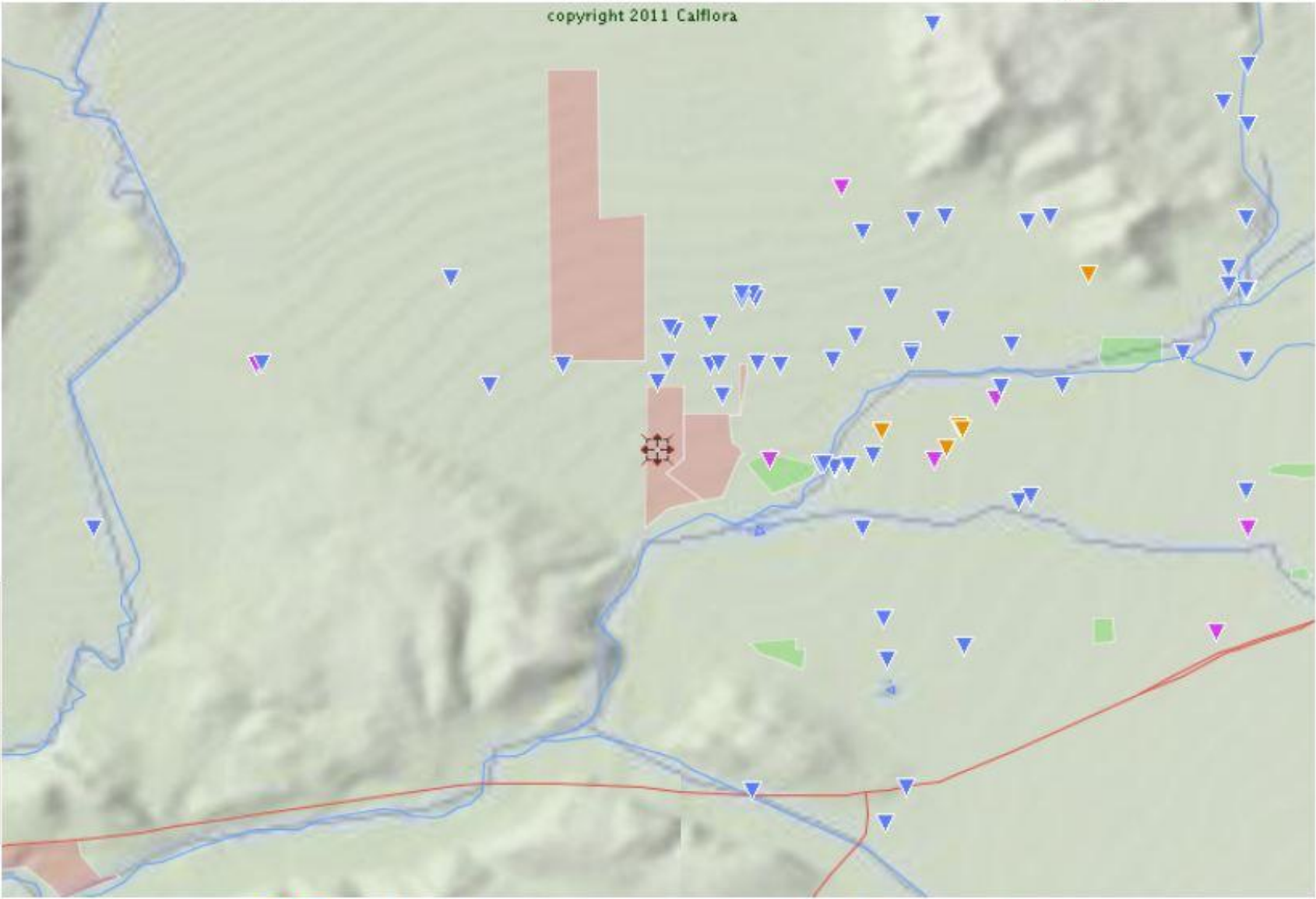
Geraniaceae	<i>Erodium botrys</i>		longbeak stork's bill	Ann			4: <i>Erodium%20b</i>	1
Geraniaceae	<i>Erodium brachycarpum</i>		Foothill filaree	Ann			4: <i>Erodium%20b</i>	1
Geraniaceae	<i>Erodium cicutarium</i>		redstem stork's bill	Ann			3: <i>Erodium_cicutarium</i>	1
Geraniaceae	<i>Geranium dissectum</i>		cutleaf geranium	Ann			2: <i>Geranium_dissectum</i>	1
Juncaceae	<i>Juncus ambiguus</i>		seasice rush	Ann	X			1
Juncaceae	<i>Juncus balticus</i> ssp. <i>ater</i>		Baltic rush (group 2)	Per	X			1
Juncaceae	<i>Juncus bufonius</i>		toad rush	Ann	X			0
Juncaceae	<i>Juncus bufonius</i> var. <i>bufonius</i>		toad rush	Ann	X			2
Juncaceae	<i>Juncus bufonius</i> var. <i>congestus</i>		toad rush	Ann	X			1
Juncaginaceae	<i>Triglochin scilloides</i>	<i>Lilaea scilloides</i> ,	Flowering-quillwort	Ann (aquatic)	X			3
Liliaceae	<i>Fritillaria agrestis</i>		stinkbells	Per (bulb)	X	4.2		1
Malvaceae	<i>Malva sylvestris</i>		high mallow	Per				1
Malvaceae	<i>Malvella leprosa</i>		alkali mallow	Per	X			2
Malvaceae	<i>Sidalcea malviflora</i> ssp. <i>laciniata</i>		dwarf checkerbloom	Per (rhizomatous)	X			3
Marsileaceae	<i>Pilularia americana</i>		American pillwort	Fern	X			3
Montiaceae	<i>Calandrinia ciliata</i>		red maids	Ann	X			2
Montiaceae	<i>Montia fontana</i>		annual water minerslettuce	Ann	X			1
Oleaceae	<i>Fraxinus latifolia</i>		Oregon ash	Tree	X			1
Onagraceae	<i>Epilobium ciliatum</i> ssp. <i>ciliatum</i>		fringed willowherb	Per	X			1
Onagraceae	<i>Oenothera sinuosa</i>	<i>Gaura sinuata</i>	Wavy-leaved gaura	Per				1
Orobanchaceae	<i>Bellardia trixago</i>		Mediterranean lineseed	Ann			3: <i>Bellardia_trixago</i>	1
Orobanchaceae	<i>Castilleja densiflora</i> ssp. <i>densiflora</i>		denseflower Indian paintbrush	Ann	X			2
Orobanchaceae	<i>Castilleja exserta</i> ssp. <i>exserta</i>		exserted Indian paintbrush	Ann	X			1
Orobanchaceae	<i>Chloropyron molle</i> ssp. <i>hispidum</i>	<i>Cordylanthus mollis</i> ssp. <i>hispidus</i>	Hispid bird's-beak	Ann	X	1B.1		9
Orobanchaceae	<i>Chloropyron palmatum</i>	<i>Cordylanthus palmatus</i>	Palmate-bracted bird's-beak	Ann	X	1B.1		16
Orobanchaceae	<i>Triphysaria eriantha</i> ssp. <i>eriantha</i>		johnny tuck	Ann	X			2
Papaveraceae	<i>Eschscholzia californica</i>		California poppy	Ann, Per	X			1
Plantaginaceae	<i>Callitriche marginata</i>		winged water starwort	Ann (aquatic)	X			2
Plantaginaceae	<i>Plantago elongata</i>		prairie plantain	Ann	X			6
Plantaginaceae	<i>Plantago erecta</i>		Foothill plantain	Ann	X			1
Plantaginaceae	<i>Veronica peregrina</i> ssp. <i>xalapensis</i>		Neckweed	Ann	X			0
Poaceae	<i>Stipa brachychaeta</i>	<i>Achnatherum brachychaetum</i>	Puna needle grass	Perennial				2
Poaceae	<i>Alopecurus saccatus</i>		Pacific foxtail	Ann	X			6

Poaceae	<i>Avena barbata</i>		slender oat	Ann, Per		2:Avena_barbat	1
Poaceae	<i>Avena fatua</i>		Common wild oats	Ann		2:Avena_fatua.p	1
Poaceae	<i>Bromus hordeaceus</i>		soft brome	Ann		3:Bromus_horde	1
Poaceae	<i>Crypsis schoenoides</i>		swamp pricklegrass	Ann			2
Poaceae	<i>Cynosurus echinatus</i>		Annual dogtail	Ann		2:Cynosurus_ec	1
Poaceae	<i>Deschampsia cespitosa</i> ssp. <i>cespitosa</i>		tufted hair grass	Per	X		1
Poaceae	<i>Deschampsia danthonioides</i>		annual hairgrass	Ann	X		5
Poaceae	<i>Distichlis spicata</i>		Saltgrass	Per	X		2
Poaceae	<i>Elymus triticoides</i>		Beardless wild rye	Per	X		1
Poaceae	<i>Festuca arundinacea</i>		tall fescue	Per		2:Festuca_arunc	1
Poaceae	<i>Festuca microstachys</i>			Ann	X		1
Poaceae	<i>Hordeum brachyantherum</i>		meadow barley	Per	X		0
Poaceae	<i>Hordeum depressum</i>		dwarf barley	Ann	X		1
Poaceae	<i>Hordeum marinum</i> ssp. <i>gussoneanum</i>		Mediterranean barley	Ann			1
Poaceae	<i>Hordeum murinum</i> ssp. <i>leporinum</i>		mouse barley	Ann			1
Poaceae	<i>Hordeum vulgare</i>		common barley	Ann			1
Poaceae	<i>Koeleria macrantha</i>		junegrass	Per	X		1
		Leptochloa					
Poaceae	<i>Leptochloa fusca</i> ssp. <i>uninervia</i>	uninervia	Mexican sprangletop	Ann	X		2
Poaceae	<i>Parapholis incurva</i>		curved sicklegrass	Ann			1
Poaceae	<i>Phyllostachys bambusoides</i>		Japanese timber bamboo	Shrub			0
Poaceae	<i>Pleuropogon californicus</i>		annual semaphoregrass	Per (rhizomX			6
Poaceae	<i>Puccinellia distans</i>		weeping alkaligrass	Per			0
Poaceae	<i>Puccinellia nuttalliana</i>		Nuttall's alkaligrass	Per	X		1
Poaceae	<i>Puccinellia simplex</i>		California alkaligrass	Ann	X		2
Poaceae	<i>Sporobolus airoides</i>		alkali sacaton	Per	X		3
Poaceae	<i>Stipa pulchra</i>		Purple needle grass	Per	X		1
Polemoniaceae	<i>Leptosiphon liniflorus</i>		narrowflower flaxflower	Ann	X		7
Polemoniaceae	<i>Navarretia cotulifolia</i>		cotulaleaf pincushionplant	Ann	X	4.2	4
Polemoniaceae	<i>Navarretia prostrata</i>		prostrate pincushionplant	Ann	X	1B.1	1
Polygonaceae	<i>Rumex conglomeratus</i>		clustered dock	Per			0
Polygonaceae	<i>Rumex crispus</i>		curly dock	Per		3:Rumex_crispu	2
Primulaceae	<i>Dodecatheon clevelandii</i> ssp. <i>patulum</i>		padre's shootingstar	Per	X		4

Ranunculaceae	Delphinium californicum ssp. interius	California larkspur	Per	X	1B.2	0
Ranunculaceae	Myosurus minimus	Myosurus minimus ssp. minimus	Ann	X		9
Ranunculaceae	Myosurus minimus ssp. apus	little mouse tail	Ann	X	3.1	3
Ranunculaceae	Myosurus sessilis	Myosurus sessilis ssp. alopecuroides, Myosurus sessilis ssp. sessilis	Ann	X		8
Ranunculaceae	Ranunculus aquatilis var. aquatilis	Ranunculus aquatilis var. hispidulus	Per (aquatic)	X		0
Rosaceae	Aphanes occidentalis	Lady's mantle	Ann, Per	X		1
Saxifragaceae	Micranthes californica	Saxifraga californica	Per	X		1
Selaginellaceae	Selaginella bigelovii	bushy spikemoss	Fern (moss)	X		1
Solanaceae	Solanum elaeagnifolium	Silverleafnettle	Per		4:Solanum%20e	0
Tamaricaceae	Tamarix parviflora	Fourstamen tamarisk	Tree, Shrub		1:Tamarix_parv	1
Themidaceae	Brodiaea elegans	Harvest brodiaea	Per	X		1
Themidaceae	Brodiaea terrestris ssp. terrestris	dwarf brodiaea	Per	X		5
Themidaceae	Dichelostemma capitatum ssp. capitatum	bluedicks	Per	X		1
Themidaceae	Muilla maritima	sea muilla	Per	X		2
Themidaceae	Triteleia hyacinthina	white brodiaea	Per	X		4
Themidaceae	Triteleia laxa	Ithuriel's spear	Per	X		1
Typhaceae	Typha angustifolia	narrowleaf cattail	Per (aquatic)			1
Zannichelliaceae	Zannichellia palustris	horned pondweed	Per	X		0

List assembled/organized by Lech Naumovich, Golden Hour Restoration Institute

Area included



■ ■ ■ Points indicate observations - Mouse over or click points for observation details.